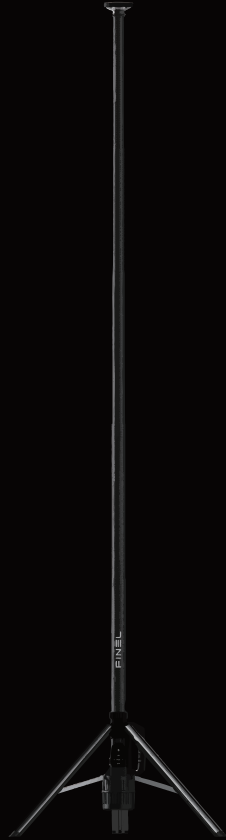


# 중복투자의 끝. FINEL



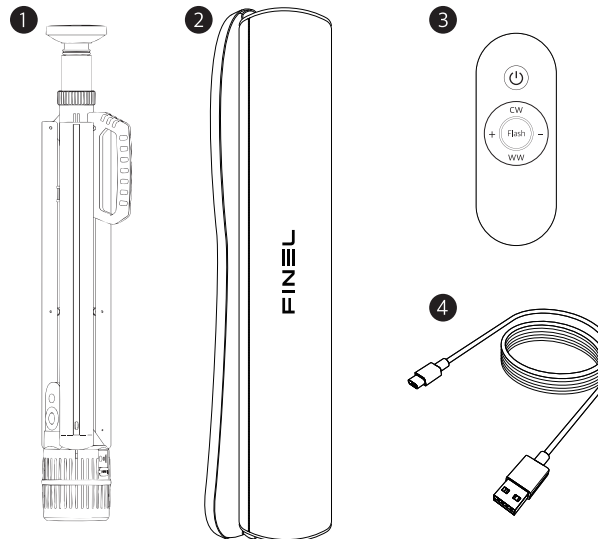
# N7

## Manual

### I Specification

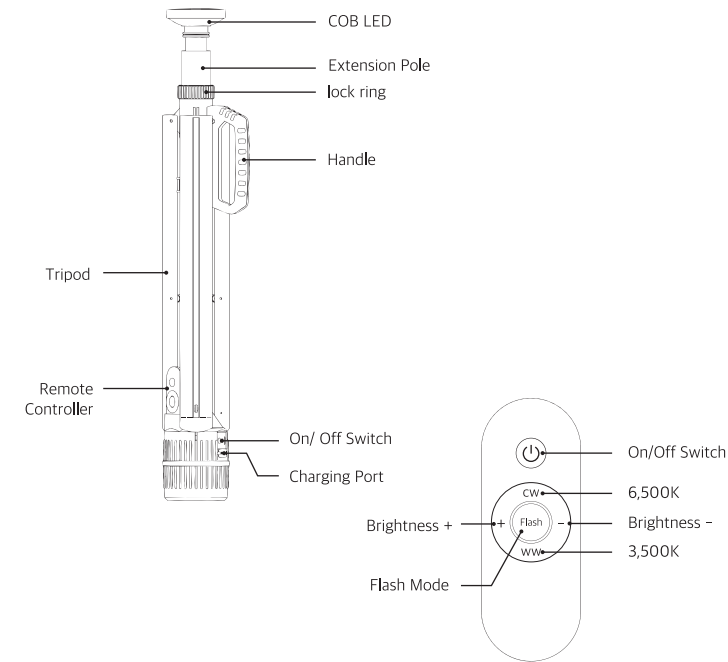
<b>Model No.</b>	FINEL N7
<b>Size</b>	Min. 100*460*700(mm) Max. 680*680*2500(mm)
<b>Luminous Flux</b>	3,000K : about 1,300Lumen (CW Mode) 4,500K : about 2,000Lumen (CW+WW Mode) 6,500K : about 1,250Lumen (WW Mode)
<b>Operating Rate</b>	3,000K : about 2H 15min. (CW Mode) 4,500K : about 5H (CW+WW Mode) 6,500K : about 2H 15min. (WW Mode)
<b>Battery</b>	7.4V Li-ion 6,000mAh / 44.4Wh
<b>Charge Method</b>	USB-C Type
<b>Charging input</b>	5V 2A
<b>Charging Rate</b>	6 Hour
<b>Weight</b>	2.2 kg

### I Components



1	N7(Main Product)	1 EA
2	600D Oxford Pouch	1 EA
3	Remote Controller	1 EA
4	USB A to C Cable (2M)	1 EA

### I Features



#### How to unfold

1. Unlock the lock ring clockwise, unfold the support, and then turn the lock ring counterclockwise.
2. After unfolding the light, lift the light head up and tighten the first pole clockwise, then unfold the second, third, and fourth poles and tighten them in the same way. (The light can be adjusted in 5 heights, and can be adjusted up to 2.5m.)

#### How to fold

1. After folding the light, unscrew the fourth pole counterclockwise, and fold the third, second, and first poles in the same way. Unscrew the locking ring clockwise, and after folding the tripod, turn the locking ring counterclockwise.

#### How to pair the remote control

1. If the light does not turn on, press the power button for 3 seconds to enter the code mode.
2. Press the +/- button on the remote control for 10 seconds to enter the code. If the code matches successfully, the remote control can be operated.

※ When you turn on the lights, start setting is 4,500K /2000 Lumen. After the turn on, you can control the CCT and Brightness with the remote controller.

## I Basic Safety Instructions

- Do not look directly at the LED light. Bright light can cause eye damage.
- Do not leave the product in a humid place for a long time.
- Do not handle the charging cable carelessly.
- If the light overheats during use, stop using it immediately.
- Do not apply excessive shock to the product or drop it.
- Do not contact the USB input terminal with metal objects.
- Do not use the product in an environment below 10°C or above 50°C.
- Be sure the product has cooled down sufficiently before touching it.
- To prevent accidents and injuries such as fire, electric shock, or injury, be sure to follow the relevant instructions.

## I Precautions for use

- Do not use it for any purpose other than what is specified in this manual.
- This product has a waterproof rating of IP44. If used in an environment higher than IP44, circuit and electronic errors may occur.
- Be careful not to let children play with it.
- When charging the battery, be sure to use the USB cable included with the package.
- Charge the battery using a charger with an output voltage of 5V2A.
- Please charge it first after receiving the product.

## I Battery Safety Instructions

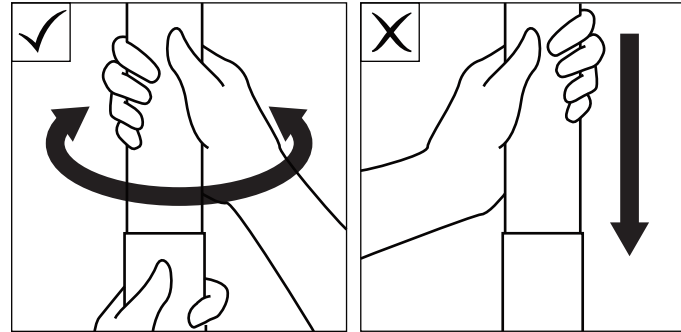
- If the battery is left fully charged, battery efficiency may decrease.
- Store the battery in a cool, dry place.
- Using it under extreme conditions such as overcharge and over-discharge may affect the product life.
- Use a charger and charging cable in good condition.
- Do not store in places where the temperature is above 40°C.
- Charge in a place where the ambient temperature is between 4°C and 40°C.
- Do not short-circuit the terminals of a separated battery. There is a risk of fire.



Since the implementation of the European Directive 2002/96/EU in national legal systems, the following applies:

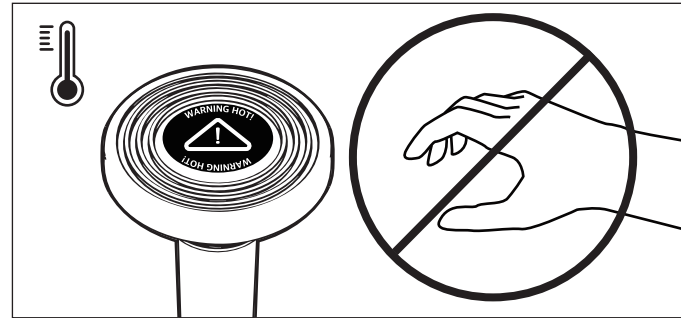
Electrical and electronic devices cannot be disposed of with household waste. Consumers have a legal obligation to return electrical and electronic devices, which makes an important contribution to environmental protection.

## I Precautions when installing the product



When extending or folding the extension pole of the light, push it while turning it clockwise/counter-clockwise.

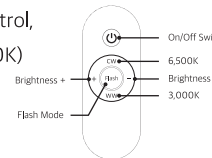
※ There is a risk of injury if you fold the pole by pressing it with force.



Do not touch the head of the light with your hands, as this may result in burns.

## I Details

<b>LED</b>	COB LED
<b>CCT</b>	3,000K / 4,500K / 6,500K
<b>Luminous Flux</b>	4,500K : 2,000Lm 6,500K : 1,200Lm 3,000K : 1,200Lm
<b>Light Mode</b>	When operating the remote control, On/Off Switch : CW + WW (4,500K) CW : White Light(6,500K) WW : Warm light(3,000K) Flash : Blinking
<b>Battery</b>	7.4V 6,000mAh



## I Warranty and maintenance services

- The product warranty is valid for one year from the date of purchase.
- The warranty does not cover damage caused by used parts or improper use.
- The warranty is void if the product is used for purposes other than its intended use or for commercial/professional rental purposes.
- The warranty does not cover damage caused by natural conditions or improper storage.
- Products that have been disassembled arbitrarily will not be repaired.

## I Exclusive Distributor and Service Center

# FINEL

ADD : A-407, 19, Jeonpo-daero 223beon-gil, Busanjin-gu, Busan, ROK

TEL : +82 70-4185-7164

## 중복투자의 끝.

### FINEL aims for a sustainable camping culture



FINEL aims for a healthy camping culture that is environmentally conscious.

We will provide healthier products that protect the environment and lead a sustainable camping life.

with good quality products that last a long time, rather than low-quality products that are used once and thrown away.

# FINEL